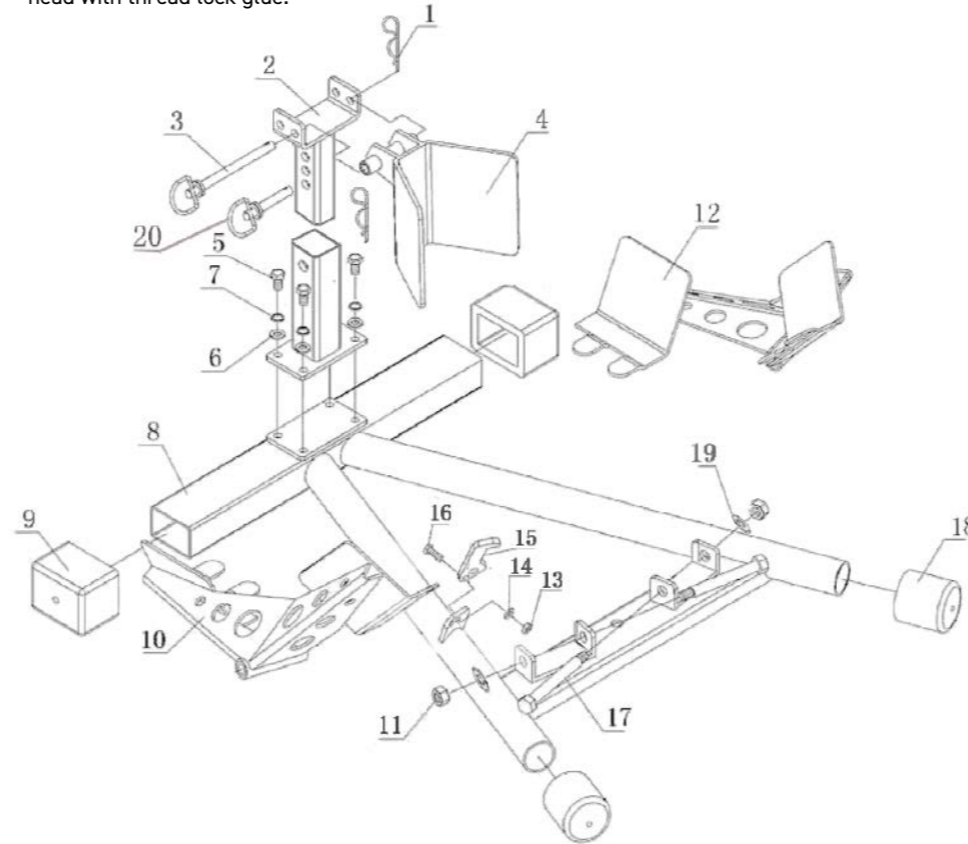




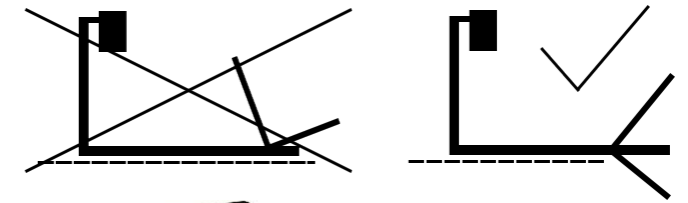
1. Assembly of the C30 front wheel transport stand

The stand is delivered disassembled. To assemble it, follow the diagram in the picture. While assembling the stand, adjust it to the desired wheel size by extending the neck and placing the upper wheel holder. Remember to secure the pins with cotter pins. Secure the screws 5 that hold the stand head with thread lock glue.



	part	pcs.		part	pcs.
1	cotter pin	2	11	large nut	2
2	upper part of the neck	1	12	right cradle half	1
3	long pin	1	13	small nut	1
4	upper wheel holder	1	14	small washer	1
5	M8 screw	4	15	safety catch	1
6	middle washer	4	16	M6 screw	1
7	spring washer	4	17	M12 screw	2
8	stand body	1	18	round rubber	2
9	square rubber	2	19	large washer	2
10	left cradle half	1	20	short pin	1

To properly seat both halves of the cradle, it is advisable to place the stand over the edge of a table, box, etc. and tilt the cradle below the level of the table edge. The cradle must be suspended below the base of the stand to allow the screws to be inserted.



2. Using the C30 transport stand

Place the transport stand in the chosen location for transport. Make sure the stand is set to the correct wheel size and drive the front wheel of the motorcycle into the stand. Simply driving into it will cause the cradle to tip over and secure the wheel. Then lock the stand by hooking the safety hook into the cradle.

We also recommend securing the position of the motorcycle inside the vehicle with tie-down straps to prevent unwanted movement during transport so the motorcycle wouldn't get damaged.

The stand can also be permanently fixed by screwing it in place using the holes in the front and rear of the stand. If the stand is securely attached to the floor, the build-in rings can be used to secure the motorcycle with tie-down straps.

Check the technical condition of the stand before each use.

Keep out of reach of children.

