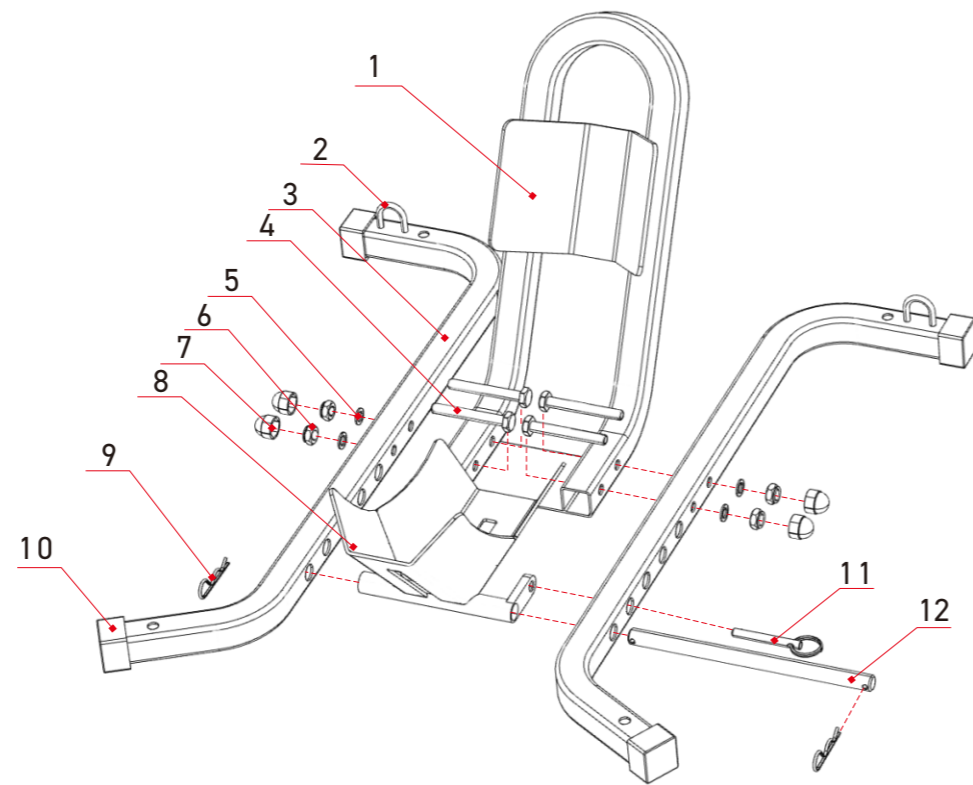




1. Assembly of the wheel chock C18

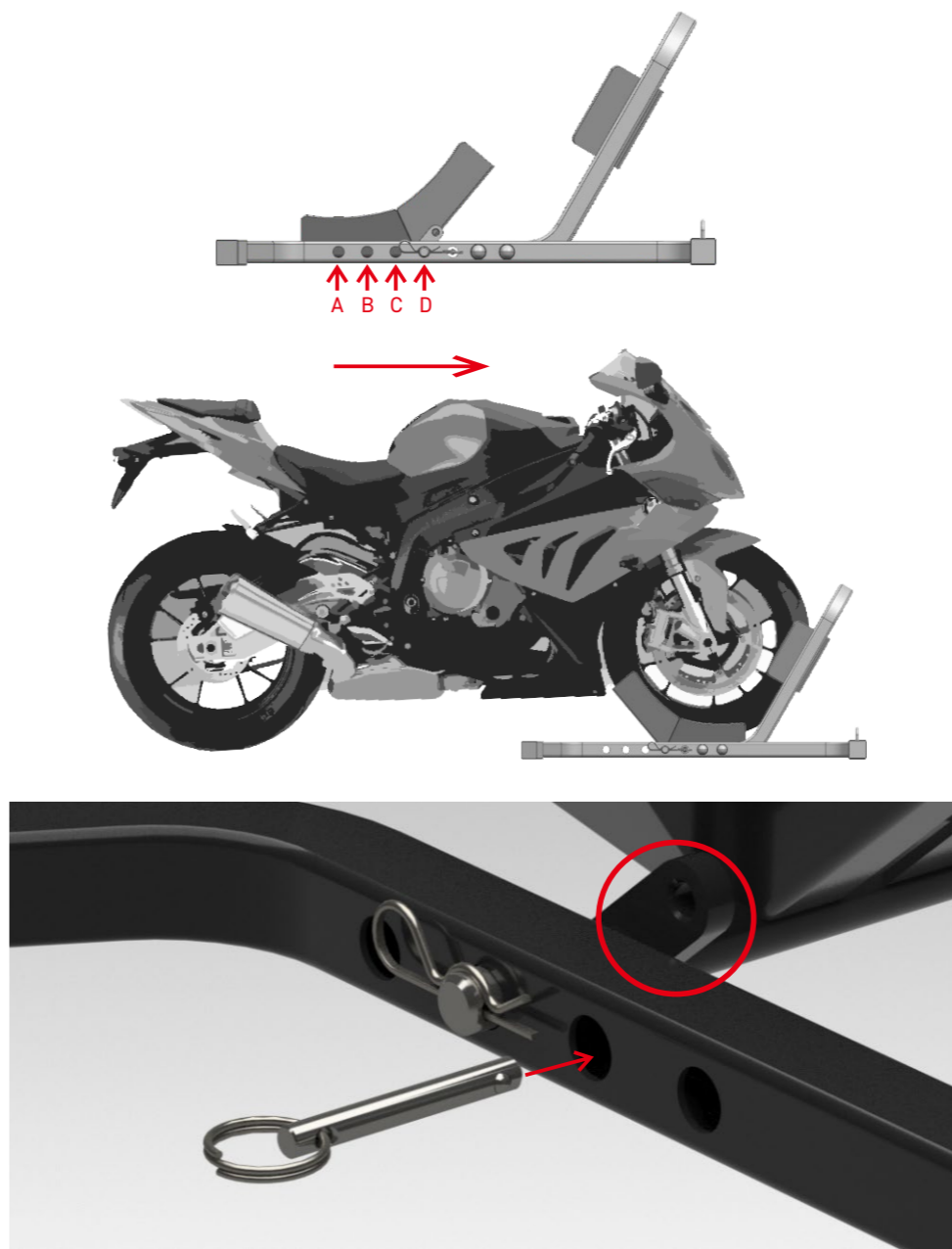
The paddock stand is delivered disassembled and some very basic assembly is required. Follow the blueprint below to attach the **left and right stand** to the **wheel chock body** using the included **washers, nuts, M10 screws** and **nut caps**. Once attached insert the **switch wheel holder**, insert the **switch axle** and secure it with both **split pins**.



No.	Part	Pcs	No.	Part	Pcs
1	wheel chock body	1	7	nut cap	6
2	strap loop		8	switch wheel holder	1
3	left and right stand	2	9	split pin	2
4	screw M10*75mm	4	10	end cap	6
5	washer M10*2mm	4	11	locking pin	1
6	nut M10	4	12	switch axle	1

2. Use of the wheel chock C18

Place the wheel chock in the location chosen for transport. Adjust the **switch wheel holder** position for the given wheel size from 10-21 inches and drive the front wheel of the motorcycle into the wheel chock. By simply driving in the chock will flip over and hold the wheel. Afterwards lock the switch holder position using the **locking pin**.



3. Warning

We strongly recommend also fixing the position of the motorcycle inside the vehicle with transport straps to prevent unwanted movement and damage to the motorcycle during the transport.

The wheel chock can also be screwed into position permanently using mounting holes in ends of the stand. If the wheel chock is fixed to the location the **strap loops** can be used to secure the motorcycle.

Prior to the use always inspect technical condition of the wheel chock. Keep away from children when in use.

